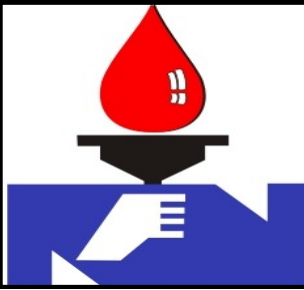


NATIONAL REFINERY LIMITED



HSE NEWS LETTER

Aug -2023

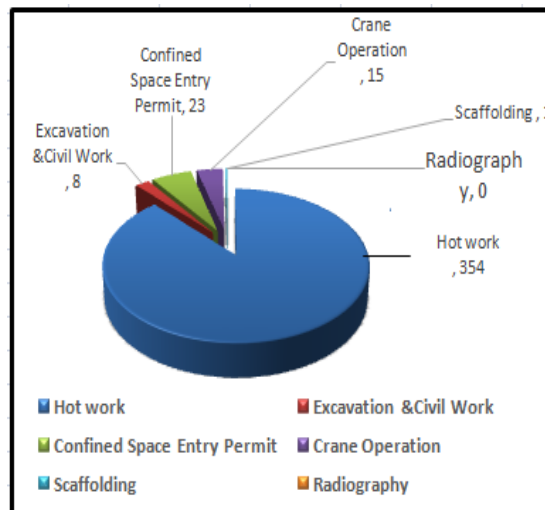
HSE Newsletter Contents:

Pg. #

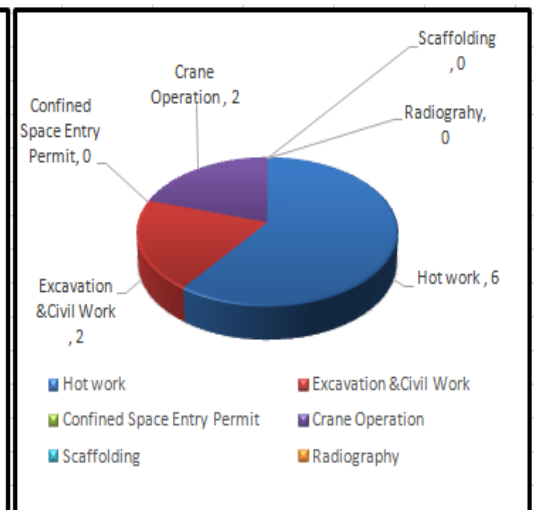
Permit to Work	1
Safe Man Hours	1
Safety Training Session at HRDC	2
Fire Drills by Fire Department	3
Incident / Ill health & Loss Time Injury	3
Environmental Monitoring Conducted By HSE Department	3
Article: EYE INFECTIONS	4

Permit to Work System at NRL Korangi & K.T

Permit is regarded as a written agreement between the person authorizing the work and the person receiving the permit to work. Following Permit to Work were issued in the Month of **August 2023** at Korangi & K.T.



Korangi Refinery



Keamari Terminal

Safe Man Hours

Question or concerns regarding this news letter may be directed to:

Manager HSE
National Refinery
Limited (NRL), 7-B,
Korangi Industrial Zone,
Karachi-74900,
Pakistan.
Email:
mgrhse@nrlpak.com

NRL Safety Board is updated by second week of every month. Safety Board shows the number of Safe Man-hours worked by NRL MPT and Non MPT Staff. By the Grace of All Mighty Allah and joint efforts by all of us, we have achieved **3.287650.721 millions** safe man-hours without Lost Time Injury (LTI) as on **31st August 2023**. Let us all give top priority towards safety, as there is no job, which cannot be done in a safer way.

**3.28 Million Safe
man hours till
31st August 2023**



SAFETY TRAINING SESSIONS AT HRDC

Safety Training Sessions conducted by **HSE Department** at **HRDC** on various topics like:

- ⇒ HSE awareness inside refinery
- ⇒ Advantages of housekeeping
- ⇒ Process safety awareness
- ⇒ Hazard Identification and risk assessment
- ⇒ Incident Investigation
- ⇒ Legal requirements related to HSE

Workplace safety training is a process that aims to provide workforce with knowledge and skills to perform work in a way that is safe for the person itself and other co-workers.



Fire Drills Conducted by Fire Department

♦ Fire Drill:

Every Thursday at 1000 hrs and Wednesday at 1530 hrs , planned fire drill conduct by the fire protection department at Korangi Refinery and Keamari terminal respectively, to check the preparedness or effectiveness of fire-fighting staff and firefighting equipment at the time of emergency. Also training regarding usage of fire fighting equipment is delivered to participant from different department in fire drill by the fire protection department.

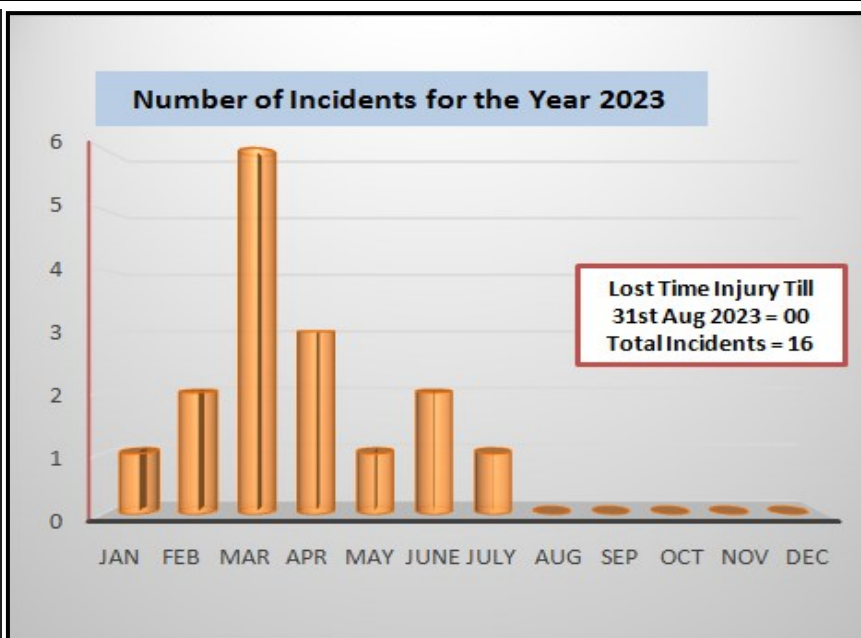


OUR AIM: NO ACCIDENTS



INCIDENT / ILL HEALTH AND LOSS TIME INJURY

Incident	An incident is an unplanned, undesired event that adversely affects completion of a task.
Near miss	A near miss describes incident where no property was damaged and no personal Injury sustained, but when given a slight shift in time or position, damage and / or injury easily could have occurred.
Accident	An accident is an undesired event that results in personal injury, property damage and equipment damage.
Loss Time injury (LTI)	If any NRL employee on duty had on the job accident, which render the employee medically unfit to resume of his duty next 24 hours is considered to be lost time injury (LTI).



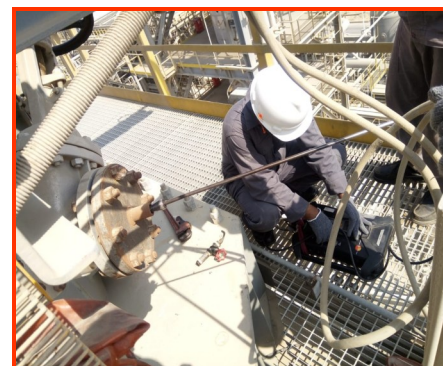
INTERNAL / EXTERNAL MONITORING CONDUCTED BY HSE DEPARTEMENT



Ambient Air Monitoring



Drinking Water Sampling



Stack Emission Testing



Fugitive Emission Testing



Noise Monitoring in Plant



Vehicle Emission Monitoring

Safety Article: EYE INFECTIONS

EYE INFECTIONS:

Eye infections are a common medical issue in people of all ages. If left untreated, they can be frustrating, painful, and potentially injurious to your eyes' health. Providers at Baptist Health can help put an end to your ailment.

Understanding Eye Infections

An eye infection is any disease of the eyes caused by a harmful microorganism, such as a virus, bacterium, or fungus. Infections tend to occur in three areas of the eye:

- Eyelid
- Cornea (the eye's clear outer surface)
- Conjunctiva (the moist layer on the inside of your eyelids and the outer surface of your eye, excluding the cornea)

Eye infections are a frequent cause of primary care visits. A wide variety have been identified with varying causes and symptoms.

Eye Infection Symptoms

Symptoms of eye infection can vary but the following are among the most prevalent:

- Red or swollen eyes
- Light sensitivity
- Pain
- Eye matter or discharge
- Watery or teary eyes
- Itching
- Dry eyes
- Blurred vision



Preventing Eye infections

- Don't touch your eyes without first washing your hands.
- If a family member has an eye infection, provide him or her with clean towels and bed-sheets. Make sure he or she doesn't share these with anyone else.
- If you're around someone with an eye infection, limit your physical contact with that person.
- Use anti-infective sprays and cleaners in shared spaces.
- If you have contact lenses, always wash your hands before handling them.