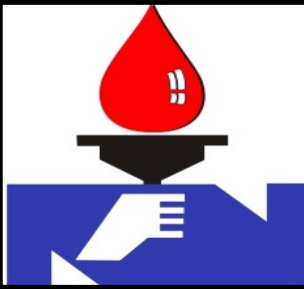


# NATIONAL REFINERY LIMITED



## HSE NEWS LETTER

June-2023

### HSE Newsletter Contents:

Pg. #

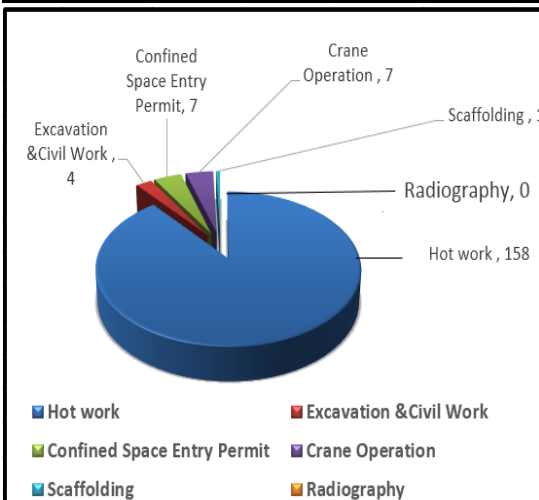
Permit to Work	1
Safe Man Hours	1
Safety Training Session at HRDC	2
Fire Drills by Fire Department	3
Incident / Ill health & Loss Time Injury	3
Environmental Monitoring Conducted By HSE Department	3
Article: Crane Operation	4

Question or concerns regarding this news letter may be directed to:

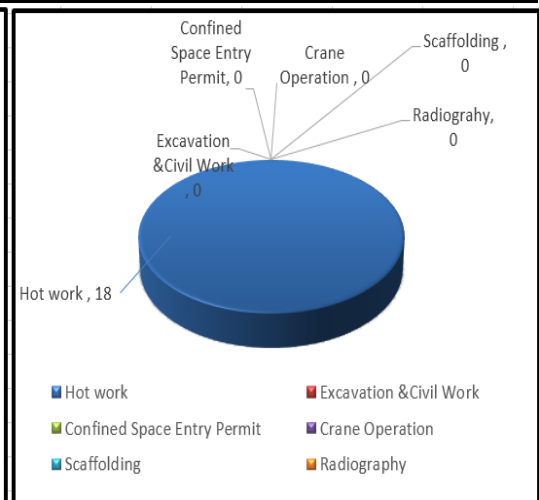
Manager HSE  
National Refinery Limited (NRL), 7-B,  
Korangi Industrial Zone,  
Karachi-74900,  
Pakistan.  
Email:  
[mgrhse@nrlpak.com](mailto:mgrhse@nrlpak.com)

### Permit to Work System at NRL Korangi & K.T

Permit is regarded as a written agreement between the person authorizing the work and the person receiving the permit to work. Following Permit to Work were issued in the Month of **June 2023** at Korangi & K.T.



Korangi Refinery



Keamari Terminal

### Safe Man Hours

NRL Safety Board is updated by second week of every month. Safety Board shows the number of Safe Man-hours worked by NRL MPT and Non MPT Staff. By the Grace of All Mighty Allah and joint efforts by all of us, we have achieved **millions** safe man-hours without Lost Time Injury (LTI) as on **30<sup>th</sup> 2.914892491 June 2023** Let us all give top priority towards safety, as there is no job, which cannot be done in a safer way.

**2.91 Million Safe  
man hours till  
30<sup>th</sup> June 2023**



## SAFETY TRAINING SESSIONS AT HRDC

### Class room training:

“ Importance of Good housekeeping, PPEs Implementation and HSE awareness “ conducted by **HSE Department at HRDC**.

Safety inductions can be a major resource for helping prevent an injury or accident from happening in the workplace. It is the direct tool for bringing awareness of safety issues and procedures to all types of workers (from regular employees, contractors or even visitors). An effective safety induction can also ensure not just safety awareness affecting the person completing a job task or role but also ensure the safety of their coworkers too. It can set out important processes to follow , such as how to report an incident, safety procedures for working at heights, confined spaces, access control, restricted areas



## Fire Drills Conducted by Fire Department

### ♦ Fire Drill:

Every Thursday at 1000 hrs and Wednesday at 1530 hrs , planned fire drill conduct by the fire protection department at Korangi Refinery and Keamari terminal respectively, to check the preparedness or effectiveness of fire-fighting staff and firefighting equipment at the time of emergency. Also training regarding usage of fire fighting equipment is delivered to participant from different department in fire drill by the fire protection department.







## INCIDENT / ILL HEALTH AND LOSS TIME INJURY

<b>Incident</b>	An incident is an unplanned, undesired event that adversely affects completion of a task.
<b>Near miss</b>	A near miss describes incident where no property was damaged and no personal Injury sustained, but when given a slight shift in time or position, damage and / or injury easily could have occurred.
<b>Accident</b>	An accident is an undesired event that results in personal injury, property damage and equipment damage.
<b>Loss Time injury (LTI)</b>	If any NRL employee on duty had on the job accident, which render the employee medically unfit to resume of his duty next 24 hours is considered to be lost time injury (LTI).

Number of Incidents for the Year 2023



## INTERNAL / EXTERNAL MONITORING CONDUCTED BY HSE DEPARTEMENT



Ambient Air Monitoring



Drinking Water Sampling



Stack Emission Testing



Fugitive Emission Testing



Noise Monitoring in Plant



Vehicle Emission Monitoring

## Safety Article: Crane Operation

### Crane Operation:

Crane operators are responsible for operating a mobile crane in order to lift, move, position, and reposition different loads of materials. The operator controls different crane functions by pressing buttons, foot pedals, and navigating crane levers.

### Most Common Crane Hazards?

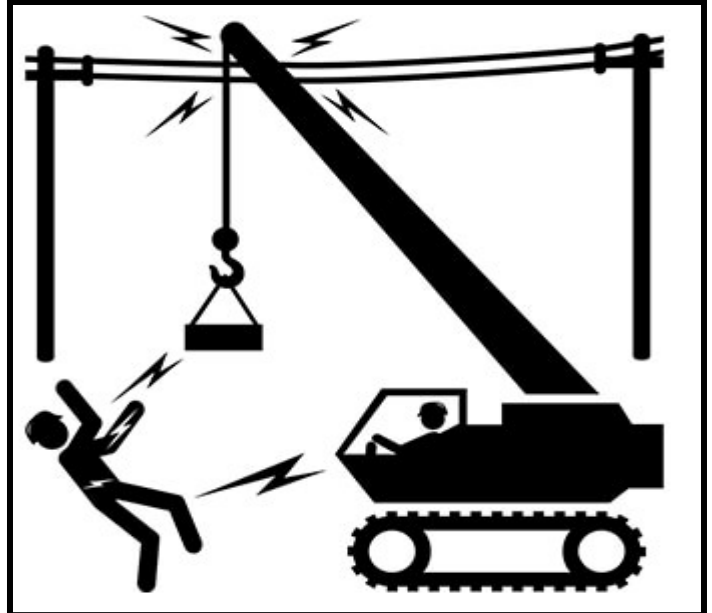
- Falling Loads
- Mechanical failure
- Operator incompetency
- Two blocking
- Crane Overload

### Crane Operation Precaution

- Select the Right Crane for the Job
- Always Utilize Qualified Personnel
- Read Operator Manuals
- Perform Daily Operator Checks
- Avoid or Clear Obstacles During Travel

### Crane Operation Controls Measures

- Avoid sudden movement or violent operation of the crane
- Operate the levers and pedals smoothly
- When lifting long loads tie a guide rope to each end of the load
- Crane Lifting Safety Procedure
- Crane Safety Devices



### BARRICADE LIFTING ZONE AND DON'T SUSPEND LOADS OVER PERSONS

